

# Iowa Library Learning Circuit

October 2022

AJ Seely – Dallas County Emergency Management Agency

# Slide Information

- Feel free to take pictures as needed!
- Slide deck will be provided.
- **Ask questions, sent via chat**

# Background – A.J. Seely

## **Emergency Management**

Director

Dallas County EMA

2018 – Present

Director

Chickasaw County EMA

2017-2018

Firefighter/Paramedic

## **Education**

Kirkwood Community College

AS - Fire Science

Cedar Rapids, IA

University of Iowa

Paramedic

Iowa City, IA

Upper Iowa University

BS – Public Administration

Fayette, IA

# Objectives:

- Provide background on the role and structure of emergency management in Iowa
- Describe the role of the Emergency Management Coordinator
- Describe the function and integration of the local emergency management agency
- Outline the importance of jurisdictional emergency and continuity planning

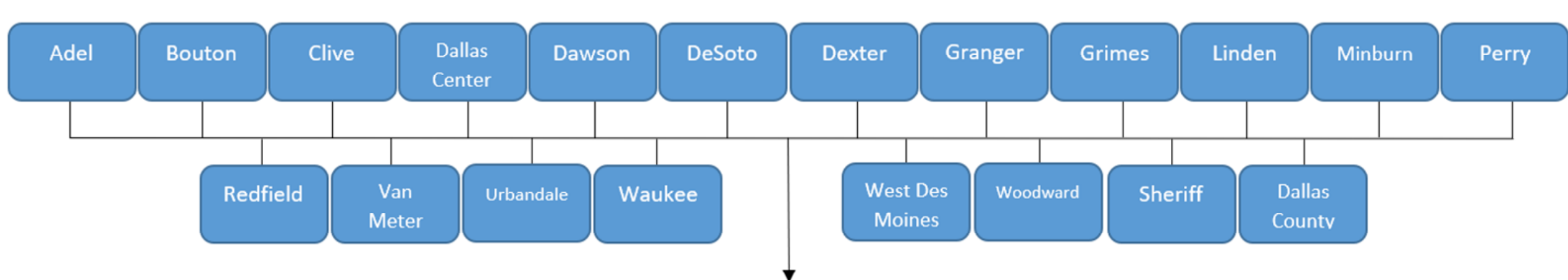
# Structure and Governance of Emergency Management

## Local Emergency Management Commission

- Mayors from each city
- Member from the Board of Supervisors
- County Sheriff



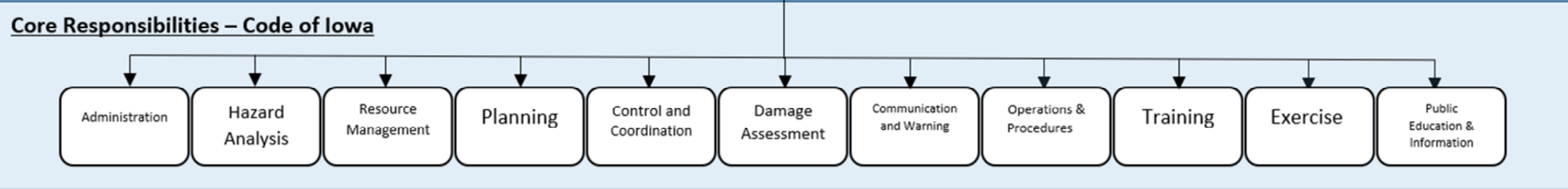
Mission: Provide direction for the delivery of the emergency management services of planning, administration, coordination, training, and support for local governments.



Emergency Management Commission

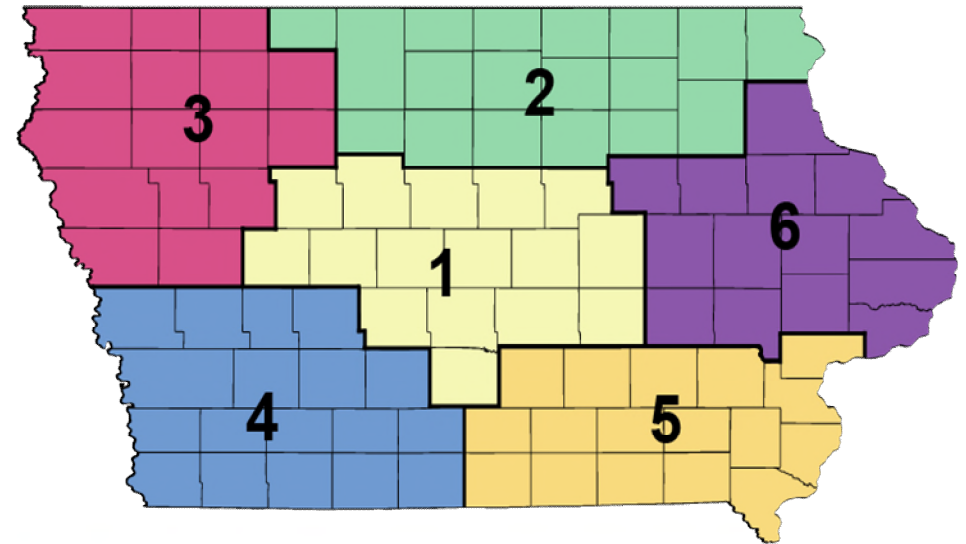
Emergency Management Agency

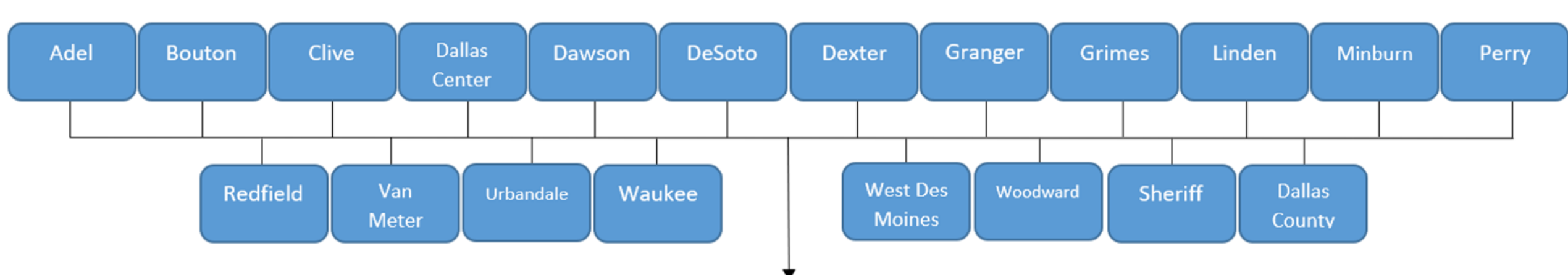
**Our Mission:**  
 The mission of the Dallas County Emergency Management Agency is to promote whole community preparedness through a collaborative, comprehensive effort to prepare, mitigate, respond and recover from all hazards.



# Every County Has an Emergency Management Agency

- Iowa Code requires Commissions to appoint an Emergency Management Coordinator.
- Agencies are staffed at various levels
- Some counties have joint Commissions
- Programs are divided into regions
- Generally co-located within county offices

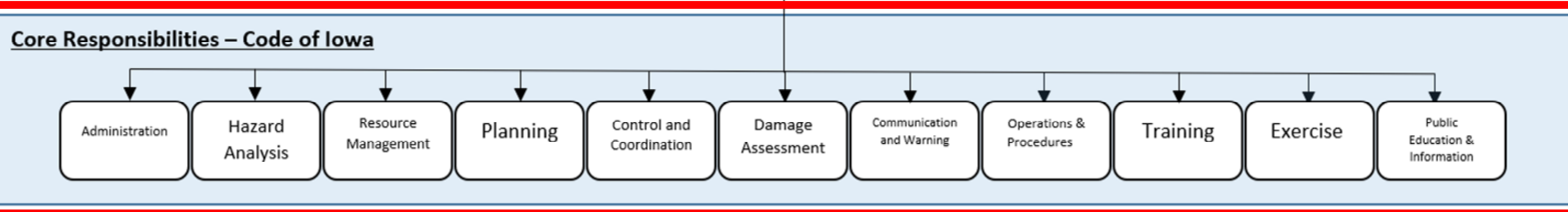




Emergency Management Commission

Emergency Management Agency

**Our Mission:**  
 The mission of the Dallas County Emergency Management Agency is to promote whole community preparedness through a collaborative, comprehensive effort to prepare, mitigate, respond and recover from all hazards.





# Daily Look

- General Coordination
- Assess hazards, risk and develop action strategies
  - Daily & overall
- Support for grant related programs
- Develop relationships and resources
- Turn practices/procedures into plans
- Facilitate training and exercise
- Respond to emergencies



# Training

- Develop a training plan based on;
  - Responder needs
  - Local shortfalls
  - New plans
- Host exercises
  - Based on training
  - Resource utilization
  - Community risks



# Response

- Variable based on need and impact.
  - Remote
  - Field
  - Emergency Operations Center (EOC)



# Integration with the local EMA

- Schedule a meeting
- Discuss your role, their role
- Discuss how you/your facility are open to supporting emergency operations.
- Share your threats, vulnerabilities and weaknesses.
- Connect to, and be the resource!



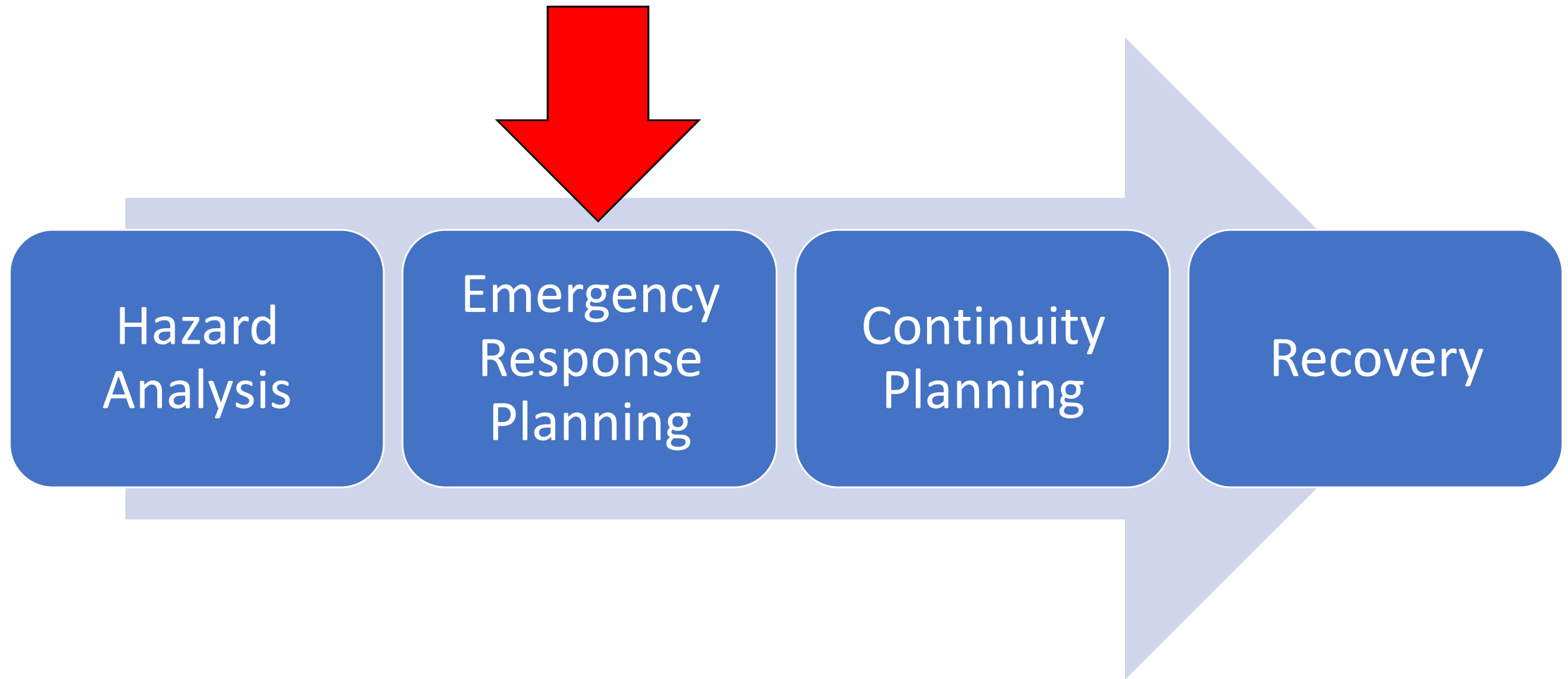
# Emergency Planning

- Establishes a known framework for the management of incidents.
- Develops mitigation measures, through policy or resources.
- Allows a pre-incident, non-clouded thought process to develop solid response strategies.
  - Include action thresholds!
- Allows the community to continue utilization of the library.
- Preparedness turns emergencies into minor-inconveniences.
- Community recovery

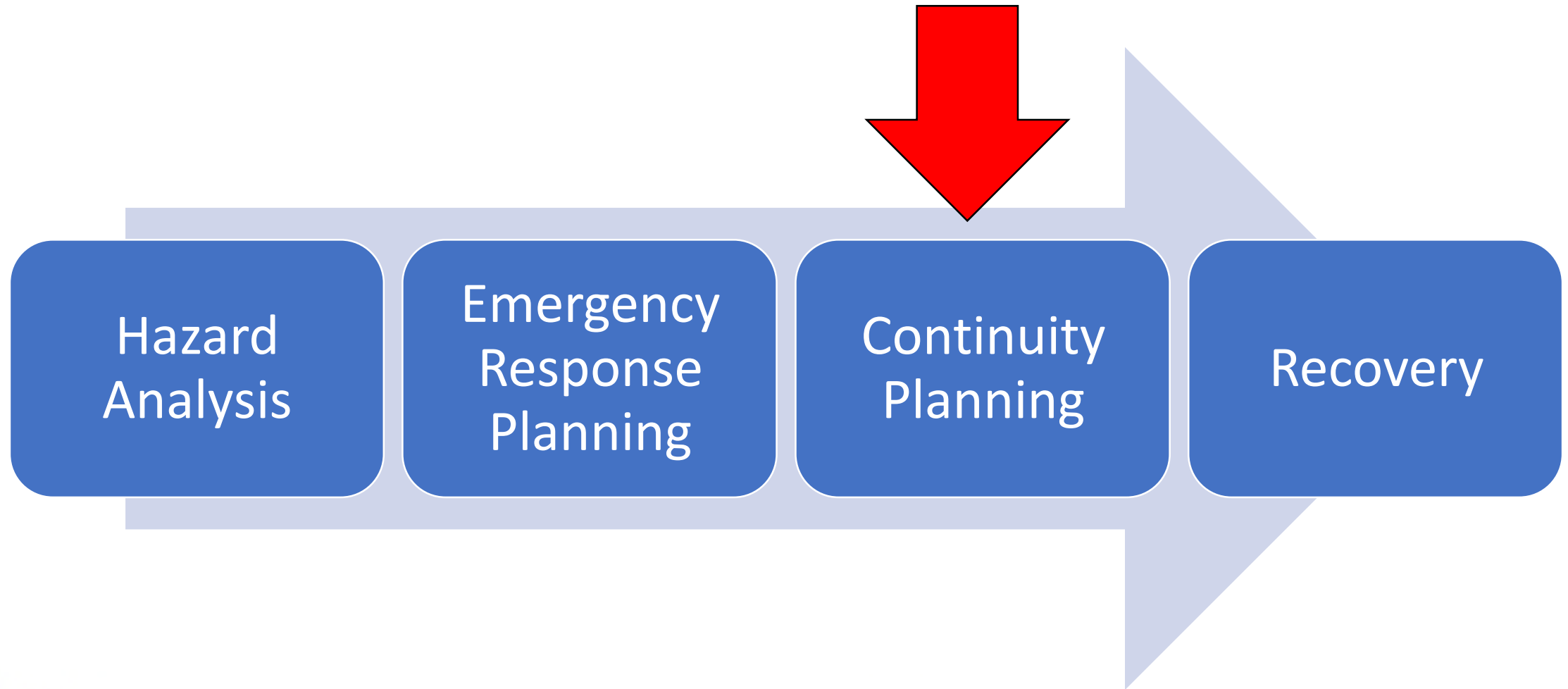
# Emergency Plan vs Continuity Plan?



# Emergency Plan vs Continuity Plan?

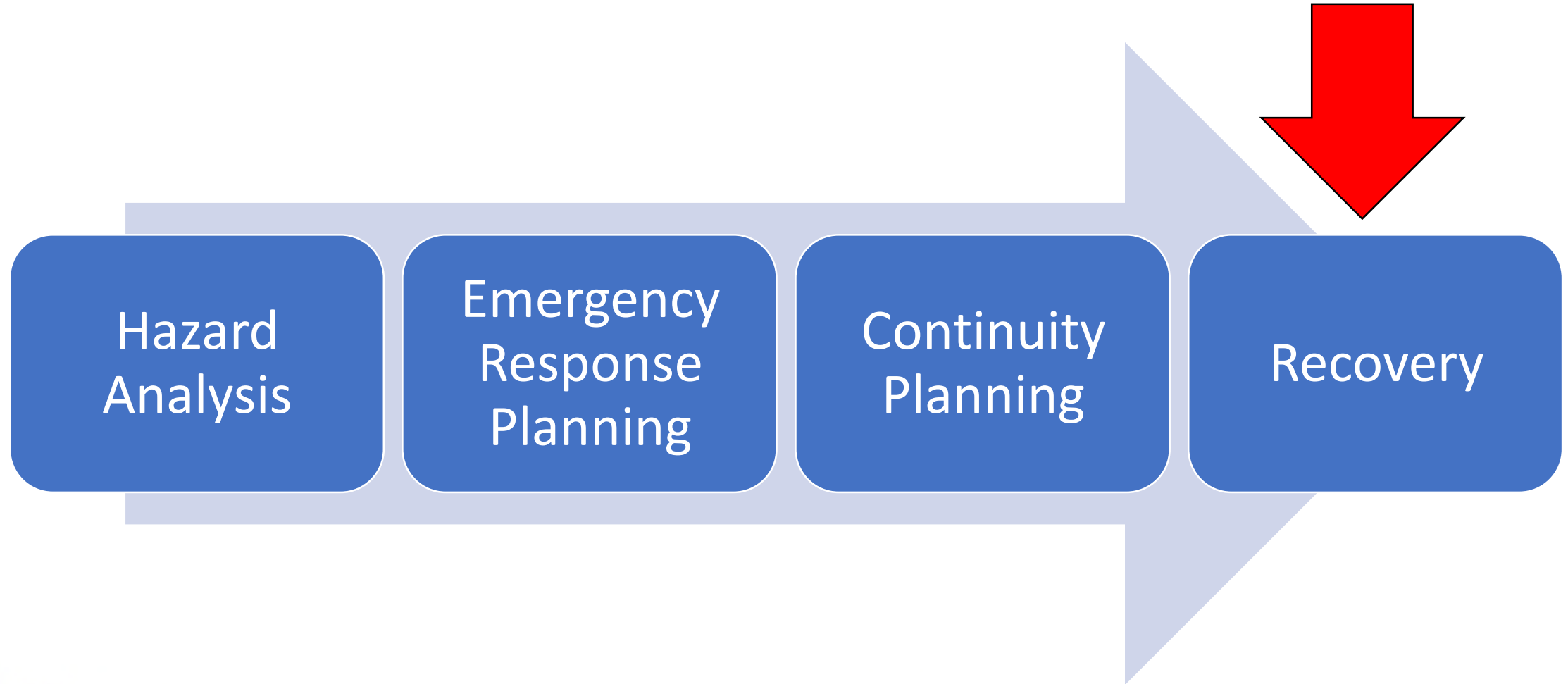


# Emergency Plan vs Continuity Plan?

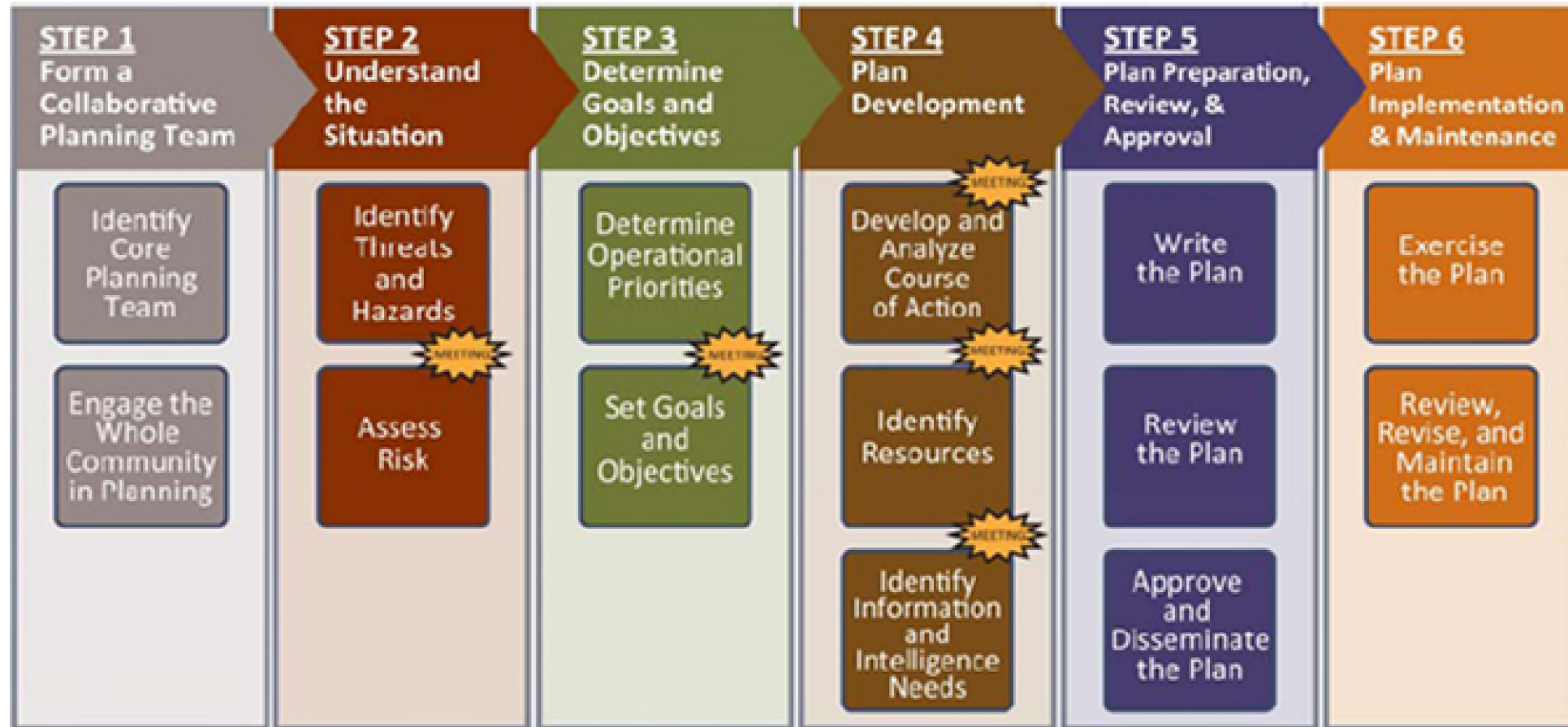




# Emergency Plan vs Continuity Plan?



# Emergency Planning Process



# Continuity Planning

- Essential functions
- Succession & delegation of authority (who is in charge?)
- Essential Records/Materials
- Alternate facilities
- Communications

Concept of Operations (CONOPS)		Yes	No
	How to activate and implement your COOP Plan is defined, including:		
	• Roles and functions of leadership and staff in various scenarios		
	• Detailed description of how operational decisions will be made		
	• Necessary actions to be taken		
	• Information flow that will accompany the actions		
	• Validation by those who must take the actions		
Organization Foundation Information		Yes	No
	• Includes Delegations of Authority		
	• Rules and procedures for order of succession include initiating conditions, notification methods and terminating conditions		
	• Includes Orders of Succession (to assume responsibility-including initiating conditions, notification methods, and terminating conditions)		

# Plan Evaluation

**Disaster Type:** Flash Flooding

**Scenario:** Excessive rainfall of 4-6 inches over highly saturated ground areas is predicted overnight.

**Anticipated impact:** 4-5 inches of water, ground level in the library.

**Priorities? Resources? Actions?**



# Integration into Community Plans/EMA

- Libraries and their staff can integrate into their community planning process to be a resource for;
  - Public preparedness campaigns
  - Preparedness materials
  - Emergency preparedness courses
  - Emergency management functions – based on need and capability
    - Serving as a recovery center, by hosting a variety of local recovery resources as a “one-stop shop” post disaster.
    - Warming/Cooling centers

## A Conversation with AJ Seely at the Perry Public Library

August 11 @ 6:00 pm - 7:00 pm



Everyone is invited to attend the free Hometown Heritage at the Carnegie Library Museum series, A Conversation With.... to meet guest community leaders and learn more about them, their jobs, and their roles in the Perry community. We will have a conversation with guest AJ Seely, Dallas County Emergency Management Coordinator, from 6:00 to 7:00 p.m., on Thursday, August 11, upstairs at the Carnegie Library Museum. No registration is needed. All are welcome! For more information, call the Carnegie Library Museum: 515-465-7713.

# Local Workshop

- Northwest: Sioux Center Public Library - Nate Huizenga (Sioux)
- North Central: Central Rivers AEA, Clear Lake office - Kris Olson (Mitchell)
- Northeast: Central Rivers AEA, Waterloo office – Mindy Benson (Black Hawk)
- Southeast: Washington Public Library - Marissa Reisen (Washington)
- Central: Johnston Public Library - AJ Mumm (Polk)
- Southwest: Clarinda Public Library - Mike Kennon (Cass)

# Closing

- Libraries can benefit from the implementation of an emergency and continuity plan
- Preparedness starts individually
- Preparedness is an intentional act
- Libraries can play a variety of roles to support emergency preparedness
- My challenge to you. Start the process.

# Questions and Contact Information

AJ Seely, Director

Dallas County Emergency Management Agency

[Aj.seely@dallascountyiowa.gov](mailto:Aj.seely@dallascountyiowa.gov)

Office: 515-993-9894

Find your local EMA: <https://homelandsecurity.iowa.gov/county-em/>